

IDAHO VOTERS' PAMPHLET

This guide contains summary and contact information for the proposed Idaho Constitutional Amendment appearing on the November 3, 2020 ballot.

- Election Day Voting from 8:00 a.m. — 8:00 p.m.
- Proposed Idaho Constitutional Amendment HJR 4
- How Absentee Voting Works
- Contact information
- County Clerk Information



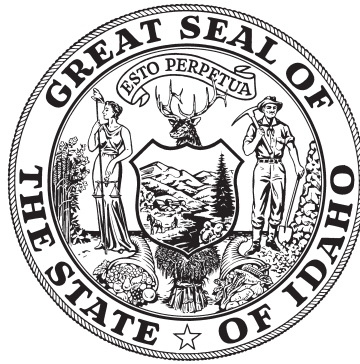
Published by
Lawrence Denney
Idaho Secretary of State

GENERAL ELECTION

TUESDAY
NOV. 3
2020



IDAHO SECRETARY OF STATE



Dear Idahoan,

This Voter Pamphlet has been prepared to help serve as a reference for you. The information presented here is intended to help you make an informed decision at the polls. By voting, you have the privilege to help select your local, state, and national leaders and you also have a part in making Idaho's laws. I encourage you to exercise this privilege by voting in the General Election Tuesday, November 3.

Also included in this pamphlet is important information on voter identification requirements, registering to vote, voting accessibility, and absentee voting options. You can check your voter registration status anytime by visiting IdahoVotes.gov. This website will also help you find the location of your polling place, register to vote, update your voter registration, and request an absentee ballot. IdahoVotes.gov also has helpful information on voting accessibility and the many types of voter assistance available in Idaho.

Every vote counts. Voting is one of your most powerful rights and an important responsibility. I encourage you to take the opportunity to let your voice be heard by voting in the General Election Tuesday, November 3. Your vote is important.

Sincerely,

A handwritten signature in black ink that reads "Lawrence Denney". The signature is fluid and cursive.

Lawrence Denney
Secretary of State

AMENDMENT NUMBER AND QUESTION HJR4

Shall Section 2, Article III, of the Constitution of the State of Idaho be amended to require that the Senate shall consist of thirty-five members; and shall Section 4, Article III, of the Constitution of the State of Idaho be amended to require that the Legislature shall be apportioned to thirty-five legislative districts?

LEGISLATIVE COUNCIL'S STATEMENT OF MEANING, PURPOSE, AND RESULTS TO BE ACCOMPLISHED

The purpose of the proposed amendment is to permanently set the number of senators in the Idaho Legislature, as well as the number of legislative districts in Idaho, at 35. (There are twice as many representatives as senators, which this amendment would not change.) Since 1992, there have been 35 districts and senators, but the Idaho Constitution permits as few as 30 and as many as 35 districts and senators, with the number determined during redistricting (the process of redrawing legislative district boundaries after a United States census). If this amendment is adopted, the number of districts and senators would be fixed at 35 and could not be changed during redistricting.

FOR

STATEMENTS FOR THE PROPOSED AMENDMENT

1. Setting the number of districts at 35 would prevent the number of districts from being reduced during redistricting in 2021. If the number of districts is reduced, Idaho would have fewer legislators, meaning that Idahoans would have less representation in the Legislature at a time when the state's population is growing and the Legislature is addressing complex issues related to population growth. With fewer legislators representing more constituents, Idahoans would have less access to their legislators, limiting their ability to discuss issues of concern with the people elected to represent their interests. Additionally, with more constituents per legislator, legislators might not be able to provide as many individuals with constituent services.
2. Setting the number of districts at 35 and thus preventing any reduction in the number of districts would also keep urban and rural interests in balance. If the number of districts is reduced, rural residents could be added to mostly urban districts, and urban residents could be added to mostly rural districts. This could result in legislators being less responsive to some constituents' interests than others. Furthermore, reducing the number of districts might require districts of great geographical size, which could include many communities that have few interests in common. Large districts might also make travel difficult, and more remote areas of the district could be ignored by legislative candidates during campaigns and by elected legislators who focus on areas where more constituents live. By preserving 35 districts, this amendment makes it more likely that Idaho residents will have representation responsive to their local interests.
3. Redistricting in Idaho is done by the bipartisan Citizens' Commission for Reapportionment and is often contentious. If the number of districts is set by law, the commission would not need to determine the number of districts, eliminating a potential point of conflict between the commissioners.

AGAINST**STATEMENTS AGAINST THE PROPOSED AMENDMENT**

1. Redistricting is a complicated process, because redistricting plans must comply with several legal requirements that can be in conflict with each other. For example, districts must be roughly equal in population, but must also avoid, to the extent possible, splitting up counties and communities - even though some counties and communities have significantly larger populations than others. Redistricting plans that fail to comply with all requirements can be challenged in court. By adding another fixed requirement, this amendment would make redistricting more difficult and might invite court challenges. The commission currently has the flexibility to determine the number of districts within a certain range because it is possible that a plan with 30 larger districts could better satisfy legal requirements than a plan with 35 smaller districts. The commission's flexibility should be preserved.
2. Changes to the redistricting process should be proposed well in advance of a redistricting year, with enough time to consider all possible consequences of the change. This amendment would cause a significant change to be made right before redistricting occurs in 2021 without sufficient time to consider the consequences.
3. Reducing the number of legislative districts would mean a corresponding reduction in the number of legislators. This would reduce the size of the government and could potentially save public funds spent on legislator salaries and benefits.

WHAT YOUR VOTE WILL DO:**YES**

A **YES** vote would **APPROVE** the proposed Idaho Constitutional Amendment to permanently set the number of senators and legislative districts in Idaho to 35.

NO

A **NO** vote would make **NO CHANGE** to the current Idaho Constitution.

KNOW YOUR VOTING OPTIONS

FIRST, MAKE SURE YOU ARE REGISTERED TO VOTE BY OCTOBER 9.

Visit IdahoVotes.gov or contact your County Clerk to **REGISTER** as a new voter, **REVIEW**, or **UPDATE** your registration information. (If you have moved or changed your name, for example.)

THEN, CHOOSE ONE OF THE FOLLOWING OPTIONS TO CAST YOUR VOTE IN THE NOVEMBER 3 GENERAL ELECTION:

OPTION 1: VOTE BY ABSENTEE BALLOT

REQUEST: The deadline to request an Absentee Ballot is **OCTOBER 23**

RETURN: Your voted Absentee Ballot must be received by the County Clerk's office no later than 8:00 p.m. (local time) on **NOVEMBER 3**

Absentee ballots may be requested online at IdahoVotes.gov* or by paper request form to your County Clerk. You can track the status of your absentee ballot online at IdahoVotes.gov.

The Secretary of State highly recommends both requesting and returning your absentee ballot as soon as possible to reduce work loads on the County Clerk's office and to allow for maximum transit time. We recommend that absentee ballots not mailed back prior to October 28 be delivered by hand. Check with your County Clerk for delivery details.

** Use of IdahoVotes.gov to request an absentee ballot requires an updated voter registration that must include an Idaho Drivers License Number.*

OPTION 2: EARLY VOTING

Early or In-Person Absentee Voting dates vary by county, but run no later than October 30. Check with your County Clerk's office for details!

OPTION 3: IN-PERSON VOTING ON NOVEMBER 3

Polling locations are open from **8:00 a.m. to 8:00 p.m.** on Election Day, **NOVEMBER 3.**

Please bring a valid photo identification card with you to your polling location (or be prepared to sign a Personal Identification Affidavit) in order to vote.

Accepted forms of photo identification may be any one of the following:

- An Idaho driver's license or Idaho photo identification card.
- A U.S. passport or Federal photo identification card.
- A tribal photo identification card.
- A current student photo ID, issued by an Idaho high school or post secondary education institution.
- A license to carry a concealed weapon issued by a county sheriff in Idaho.

*You may register to vote on Election Day at your polling location with a valid photo identification card **AND** proof of residence.*

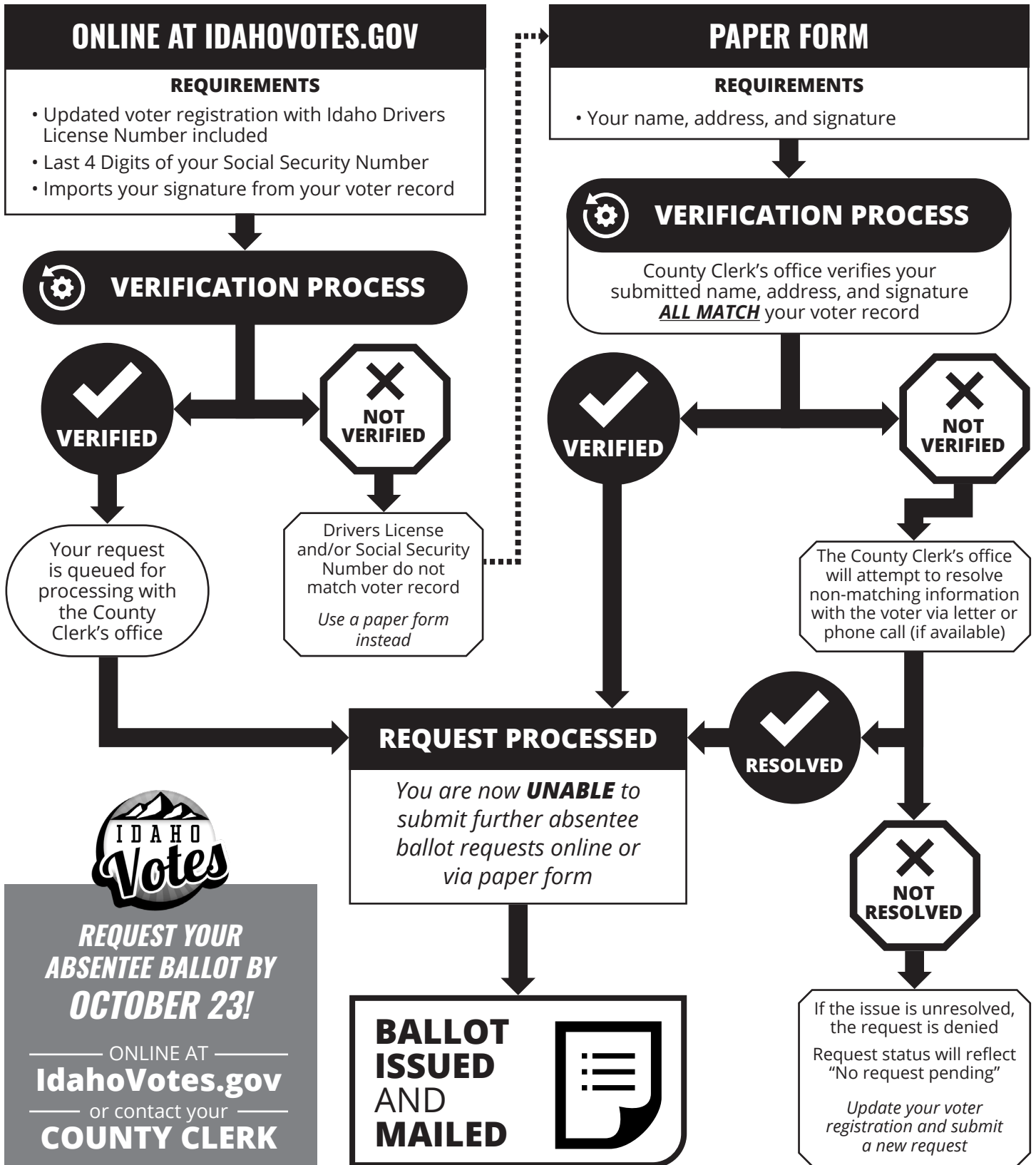


- Register to vote
- Verify and update your voter registration information
- Confirm if you've requested an absentee ballot
- Track your absentee ballot status
- Find your polling location

DO IT ALL ONLINE AT IdahoVotes.gov

HOW WE SECURE YOUR ABSENTEE BALLOT

PART 1: THE REQUEST PROCESS

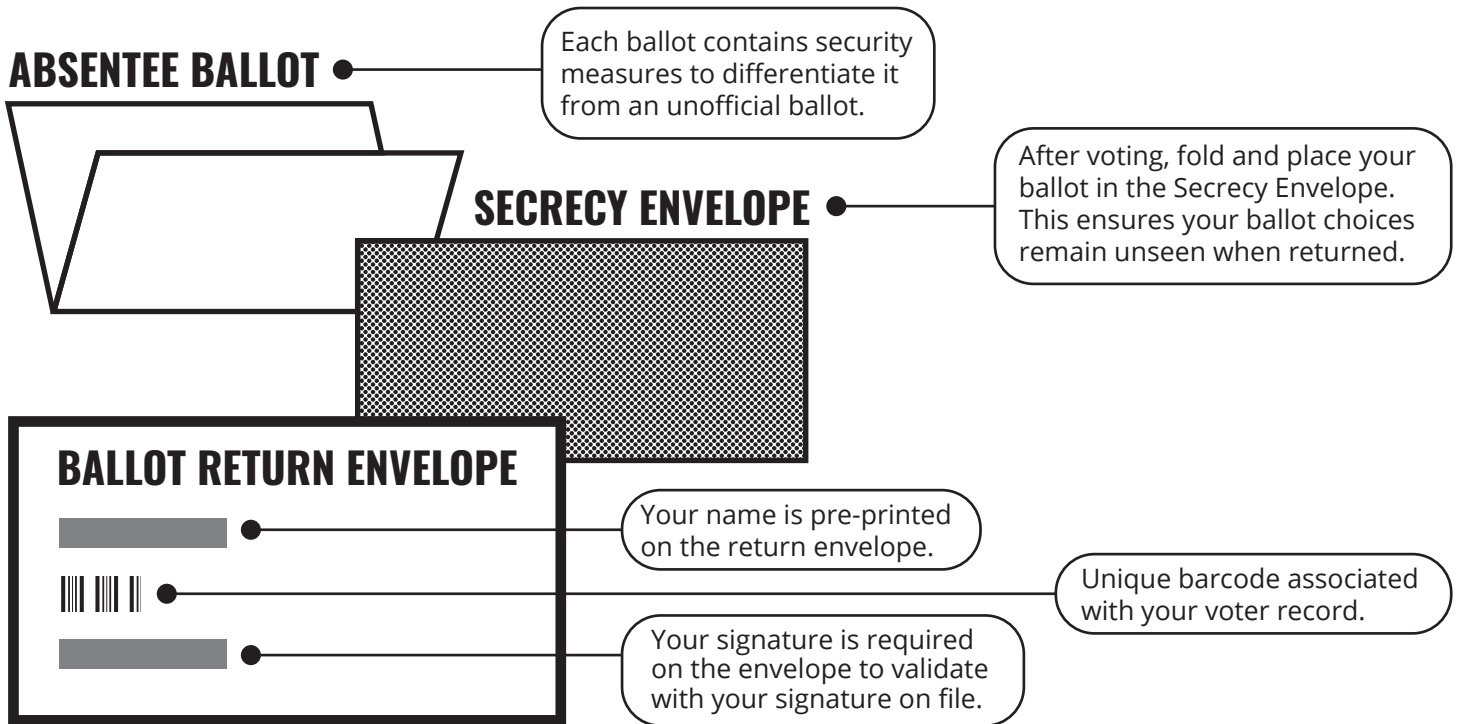


IDAHO Votes

REQUEST YOUR ABSENTEE BALLOT BY OCTOBER 23!

ONLINE AT **IdahoVotes.gov**
or contact your **COUNTY CLERK**

PART 2: SECURITY MEASURES



PART 3: BALLOT RETURN PROCESS

You're almost done! When the County Clerk's office receives your return envelope, they do the following:

FIRST: Your signature on the envelope is verified against your signature in your voter record. **If they DO NOT MATCH, the envelope is not opened and the County Clerk will attempt to resolve the issue with the voter.**

SECOND: The outer return envelope is opened and the secrecy envelope containing your ballot is removed. The County Clerk's office will verify that only one secrecy envelope is included in the return envelope. **If there are MULTIPLE SECRECY ENVELOPES in the return envelope, the County Clerk will attempt to resolve the issue with the voter.**

THIRD: The secrecy envelope is opened and your ballot is removed. The County Clerk's office will verify that only one ballot is contained in the secrecy envelope. **If there are MULTIPLE BALLOTS in the secrecy envelope, the ballots are spoiled.**

FOURTH: Your ballot is inspected for the proper security measures. The County Clerk's office will verify that the ballot is official using the established security measures. **If the security measures DO NOT MATCH, the ballot is held for investigation.**

FINALLY: Your ballot is ready to be scanned for tabulation or prepared for hand counting, depending on your county.

IMPORTANT DATES TO REMEMBER

**FRIDAY
OCTOBER 9**

LAST DAY to
Pre-register to Vote

**FRIDAY
OCTOBER 23**

LAST DAY to Request
an Absentee Ballot

**FRIDAY
OCTOBER 30**

LAST DAY for
Early Voting

ELECTION DAY: TUESDAY, NOVEMBER 3, 2020

POLLS OPEN from 8:00 a.m. to 8:00 p.m.

VOTING REQUIREMENTS AND OPTIONS



VOTER IDENTIFICATION REQUIREMENTS

A poll worker will ask you to provide identification. Several forms of photo identification will be accepted on Election Day. If you are unable to present an acceptable form of photo identification, you may choose to sign a personal identification affidavit swearing to your identity and then vote. Please review the Identification Requirements on **page 5** of this voter pamphlet, or visit IdahoVotes.gov for more information.



VOTER REGISTRATION

You can register to vote online or by mail up to 25 days before Election Day. After the pre-registration deadline, you can still register in person at your polling place on Election Day and then vote. For additional information about registering to vote, please visit IdahoVotes.gov or contact your county clerk's office.



ACCESSIBILITY

If you would like assistance to vote on Election Day, several options are available to you. These include getting assistance from a person of your choice, using voter assistance terminals, and absentee voting. Please visit the Voting Accessibility page of IdahoVotes.gov or contact your county clerk's office for detailed information about accessible voting options.



ABSENTEE VOTING

You may vote by absentee ballot if you are registered by the pre-registration deadline. You must request an absentee ballot online at IdahoVotes.gov or from your county clerk's office at least 11 days prior to Election Day. Additional information and absentee ballot request forms can be found on the Absentee Voting Information page of IdahoVotes.gov or from your county clerk's office.



EARLY VOTING

Early voting allows you to vote in person at an early voting location just as you would on Election Day. Please contact your county clerk's office for early voting locations and hours of operation.

FOR OTHER QUESTIONS

PLEASE CONTACT THE SECRETARY OF STATE'S OFFICE:

Elections Division

(208) 334-2852 • elections@sos.idaho.gov

700 W Jefferson St, Suite E205
Boise, ID 83702

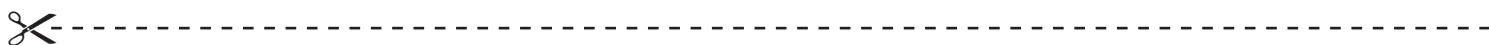
PO Box 83720
Boise, ID 83720-0080

The Secretary of State and the Idaho Commission for Libraries have partnered to provide this voter information in a format accessible to the visually impaired. An audio version of this pamphlet is available from the Talking Books Service (TBS) for TBS users or on our website at IdahoVotes.gov.

VOTER REGISTRATION FORM

If you are unable to access IdahoVotes.gov to register to vote or update your voter registration, please use the voter registration form below instead. When completed, cut it on the dotted line and mail the form to your County Clerk's office. County Clerk contact information is located on the back cover of this voter pamphlet. **THIS FORM IS NOT AN ABSENTEE BALLOT REQUEST.**

NOTE:
This form is ONLY if you need to update your voter information (*you've moved, changed your name, etc.*) or register as a NEW voter in Idaho.



Idaho Voter Registration Form

1 Last Name <i>(Print clearly in black ink.)</i>	First Name	Middle Name	2 Enter Idaho Driver's License # <div style="border: 1px solid black; width: 100%; height: 20px; margin-bottom: 5px;"></div> If no Idaho Driver's License, enter last 4 digits of Social Security # <div style="border: 1px solid black; width: 100%; height: 20px; margin-bottom: 5px;"></div> I have not been issued an Idaho DL number or SSN. <input type="checkbox"/>
WARNING: Any elector who supplies any information knowing it to be false is guilty of perjury which is punishable by imprisonment and a fine of up to \$50,000.			
3 Are you a citizen of the United States of America? Yes <input type="checkbox"/> No <input type="checkbox"/> Will you be at least 18 years of age on election day? Yes <input type="checkbox"/> No <input type="checkbox"/>			If you checked 'No' for either question, do not complete this form.
5 Residence Address (Do not use PO Box or business address. If no street address, describe location of residence by cross streets, section, township, range, or other physical description.)			4 Date of Birth ____ \ ____ \ ____ month \ day \ year
6 Mailing address if different from above			Residence in Idaho Male <input type="checkbox"/> Yrs. ____ Months ____ Female <input type="checkbox"/>
Address where previously registered			Telephone Number (Optional) _____
8 <input type="checkbox"/> Check box if Previous Name name change			7 Political Party <i>(Select one):</i> <input type="checkbox"/> Constitution <input type="checkbox"/> Democratic <input type="checkbox"/> Libertarian <input type="checkbox"/> Republican <input type="checkbox"/> Unaffiliated - (No party preference)
9 Do you have any legal disqualifications? Yes <input type="checkbox"/> No <input type="checkbox"/>			Idaho felon's rights are automatically restored upon completion of all sentencing conditions including probation or parole.
UNDER PENALTY OF LAW: By signing this card, I certify that I am a citizen of the United States and that I shall have been a resident of Idaho and the county for 30 days before the next election at which I vote; that I am at least 18 years of age on election day; and I declare under oath or affirmation that the information supplied herein is true.			10 Signature - Sign on line below. X _____ Date of Signature ____ \ ____ \ ____ month \ day \ year



**LAWRENCE DENNEY
SECRETARY OF STATE
BOISE, ID 83720-0080**

PRESORTED STANDARD
U.S. POSTAGE PAID
PERMIT NO. 679
BOISE, ID

ECRWSS Postal Customer

COUNTY CLERK OFFICES

Ada	(208) 287-6860	Gem	(208) 365-4561
Adams	(208) 253-4561	Gooding	(208) 934-5479
Bannock	(208) 236-7329	Idaho	(208) 983-2751
Bear Lake	(208) 945-2212	Jefferson	(208) 745-7756
Benewah	(208) 245-3212	Jerome	(208) 644-2714
Bingham	(208) 782-3164	Kootenai	(208) 446-1030
Blaine	(208) 788-5510	Latah	(208) 883-2249
Boise	(208) 392-4431	Lemhi	(208) 742-1667
Bonner	(208) 255-3631	Lewis	(208) 937-2661
Bonneville	(208) 529-1363	Lincoln	(208) 886-7641
Boundary	(208) 267-2242	Madison	(208) 359-6244
Butte	(208) 527-3021	Minidoka	(208) 436-9511
Camas	(208) 764-2242	Nez Perce	(208) 799-3020
Canyon	(208) 454-7562	Oneida	(208) 766-4116
Caribou	(208) 547-4324	Owyhee	(208) 495-2421
Cassia	(208) 878-5240	Payette	(208) 642-6000
Clark	(208) 374-5304	Power	(208) 226-7611
Clearwater	(208) 476-5615	Shoshone	(208) 752-1264
Custer	(208) 879-2360	Teton	(208) 354-8780
Elmore	(208) 587-2130	Twin Falls	(208) 736-4004
Franklin	(208) 852-1090	Valley	(208) 382-7100
Fremont	(208) 624-7332	Washington	(208) 414-2092